



1224 Heatheron Road Noble Park VIC

6 3 2

This huge block of land 1,035m2 approx. consists of two properties with a fantastic rental return. Possibility of multi - unit development site (STCA). Close to local schools, buses, train stations and easy access to Princess Hwy and Eastlink.

Price : \$ 1,050,000
Land Size : 1035 sqm
View : <https://www.leandco.com.au/sale/vic/south-east/noble-park/residential/house/6188557>

Front dwelling features

- ? 4 bedrooms, Master with FES and WIR,
- ? Two living areas and updated kitchen with gas appliances.
- ? Split AC cooling & gas heating, 1 car carport.
- Potential rental return at \$1,825/month

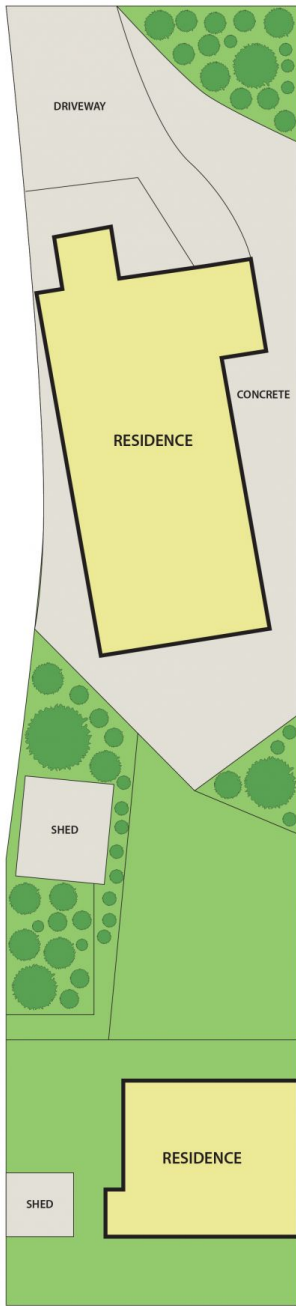
Rear dwelling features

- ? 2 bedrooms with BIRs,
- ? Open plan living, kitchen with gas appliances,
- ? Separate bathroom and laundry.



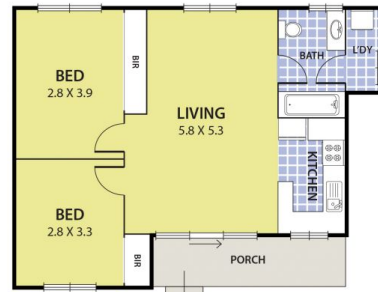
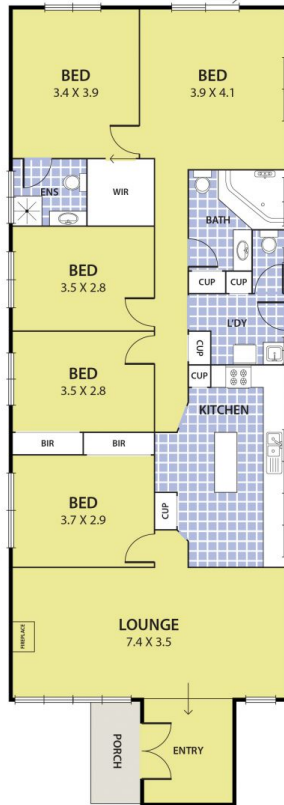
Phuc Le
03 8578 4200

1224 Heatheron Road, NOBLE PARK



69.3 M

15.6M



DISCLAIMER:

Please note plans are indicative only and not drawn to exact scale.
All dimensions are approximate