



1/15 Savige Avenue Mount Waverley VIC

3 **2** **2**

Located within a short distance walk to Syndal Station, parks, local amenities and minutes' driving to M1, famous Chadstone and The Glen shopping centres.

This well maintained young residence with plenty of natural light though out creating a fresh and bright living environment.

Featuring

- New open plan kitchen with top quality stone benchtops and splashback, and modern appliances.
- 3 generous sized bedrooms
- Master bedroom with WIR and Ensuite
- Sunroom and entertainment area
- Polished hardwood floor
- All LED downlights
- Refrigeration air conditioning and heating
- Security Alarm and intercom systems

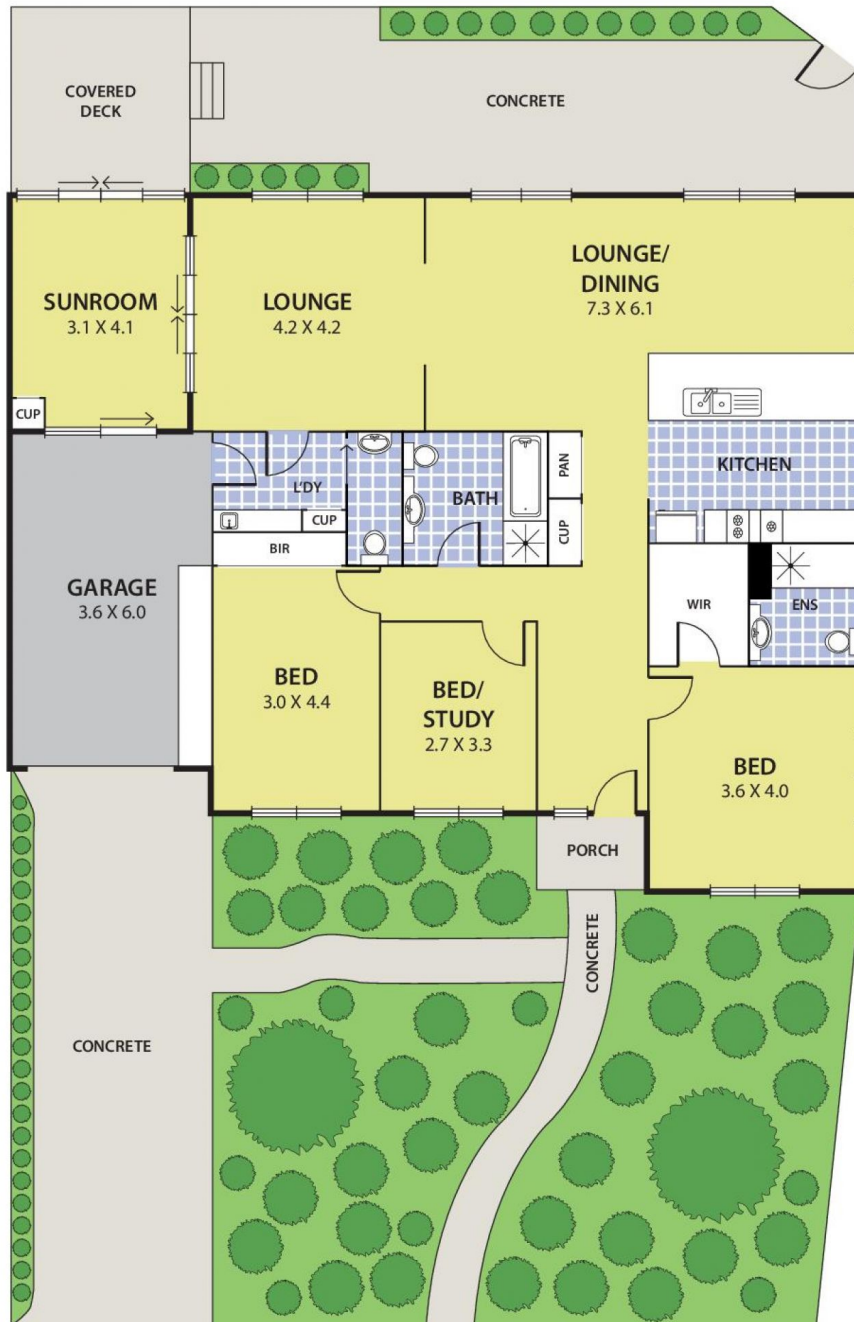
Land Size : 373 sqm

View : <https://www.leandco.com.au/sale/vic/east/mount-waverley/residential/unit/6188560>



Phuc Le
03 8578 4200

1/15 Savige Avenue, MOUNT WAVERLEY



15.4M



DISCLAIMER:

Please note plans are indicative only and not drawn to exact scale.
All dimensions are approximate