



15 Tadstan Court Clayton South VIC

3 1 1

Attention family home buyers and investors, this solid built and well maintained beauty in one of the most desirable pockets in Clayton South is ready for you and your loved one to enjoy!.

Nestled in a quiet Cul de Sac, sitting on a decent rectangular block of approx. 536 sqm land, minutes' drive to amenities like Westall Train station, Springvale central, Clayton Central, Monash Medical Centre, local reserves and parks, primary & secondary schools, and so much more that this family oriented suburb has to offer.

This beautiful Triple frontage brick home is featuring;

? 3 generous bedrooms with a BIR

? 2 living zones include a front formal lounge and family living area at rear

? Updated kitchen with a brand new canopy fan

? Dining zone with a split A/C

? Polished floorboards

Price : \$ 710,000

Land Size : 536 sqm

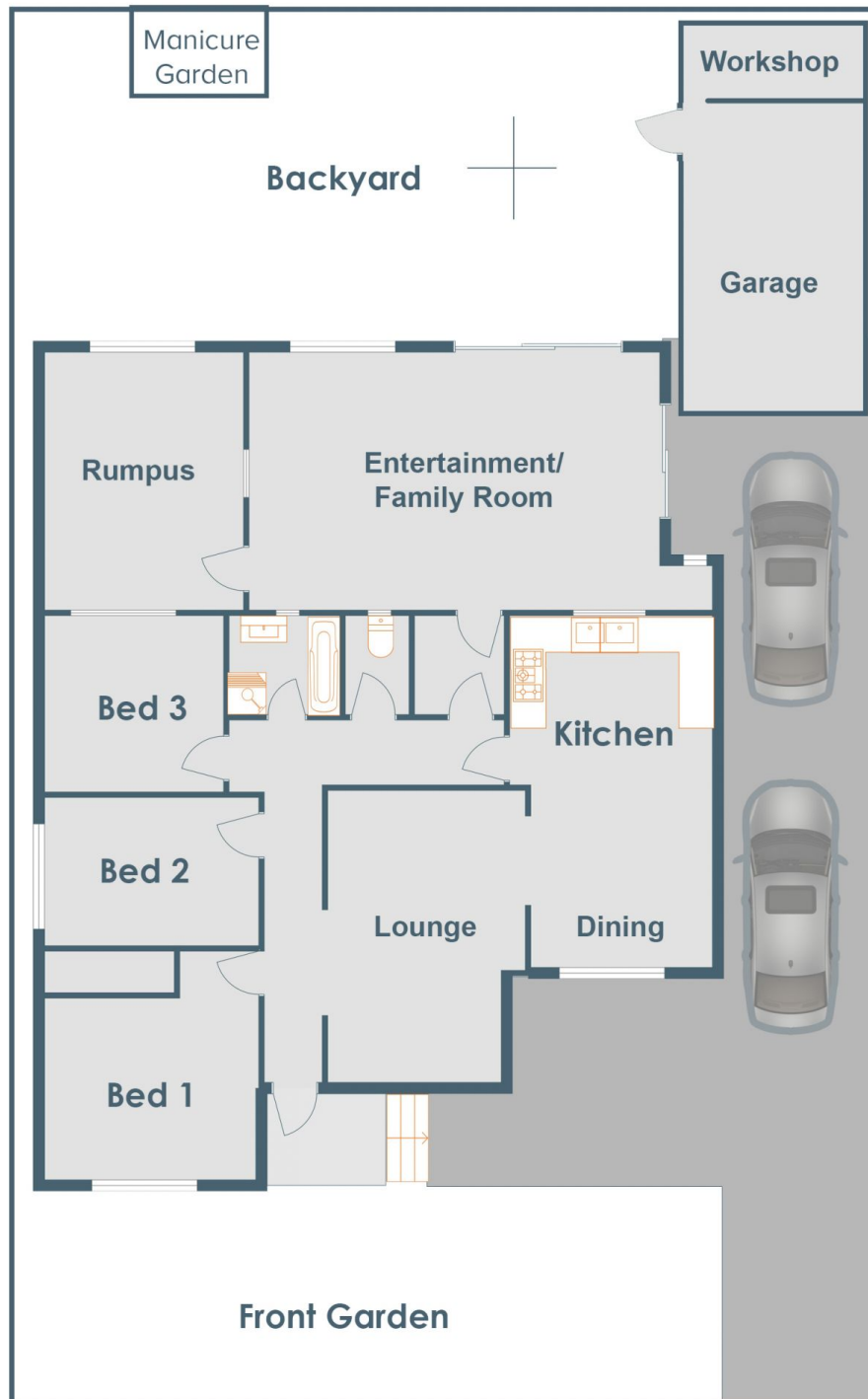
View : <https://www.leandco.com.au/sale/vic/south-east/clayton-south/residential/house/6188563>



Duncan Le
03 8578 4200



Phuc Le
03 8578 4200



15 Tadstan Ct, Clayton South

Disclaimer: Floor Plan measurements are approximate and are for illustrative purposes only. While we do not doubt the floor plans accuracy, we make no guarantee, warranty or representation as to the accuracy and completeness of the floor plan.