



3 Bombala Street Springvale VIC

3 2 2

This architecturally designed residence is ready and calling you and your growing family to move in and enjoy or for savvy investors to lease out straight away!

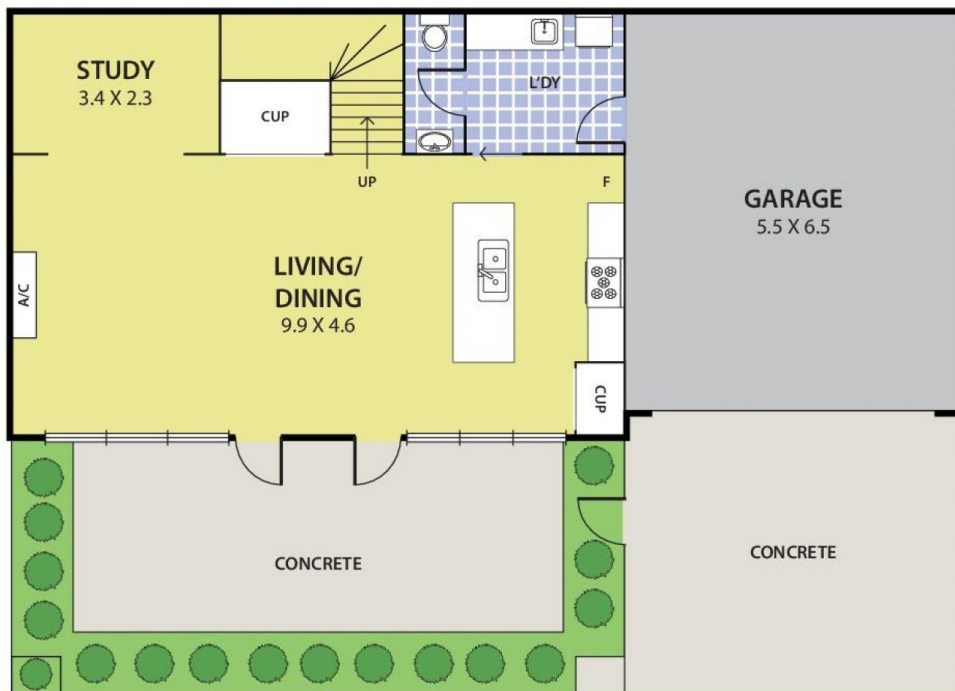
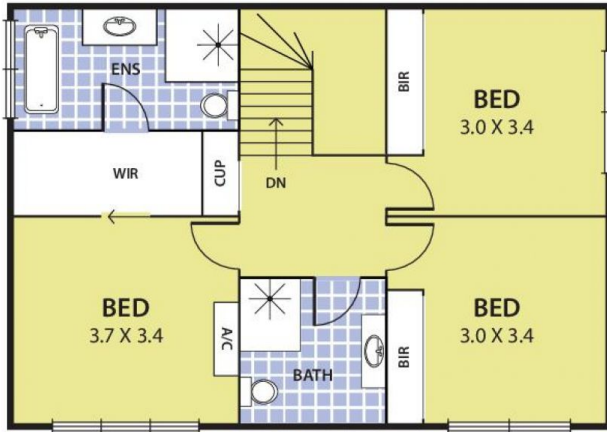
Located in the heart of well-known South Eastern suburb, Springvale, and it is just a stone throw away from all the amenities you need. Bus stops are within short steps, walking distance to Springvale central, Springvale train Station, Primary and Secondary Schools, local shops, restaurants, parks and reserves and so much more that Springvale has to offer. Easy access to both Springvale and Westall Rds and only minutes' drive to Princess Hwy, IKEA Homemaker Centre and Westall train station.

The young and spacious double storey family home is featuring;

- ? 3 generous sized bedrooms all with mirrored BIRs
- ? 2 bathrooms and 3 toilets including a powder room

Price : \$ 730,000
Land Size : 181 sqm
View : <https://www.leandco.com.au/sale/vic/south-east/springvale/residential/townhouse/6188569>

3 Bombala Street, SPRINGVALE



DISCLAIMER:

Please note plans are indicative only and not drawn to exact scale.
All dimensions are approximate