



16 Burchill Avenue Cranbourne East VIC

3 2 1

Calling all home buyers and savvy investors! This stunning family home in the most desirable pockets of Cranbourne East is ready for you and your family to move in and enjoy or lease out straightaway.

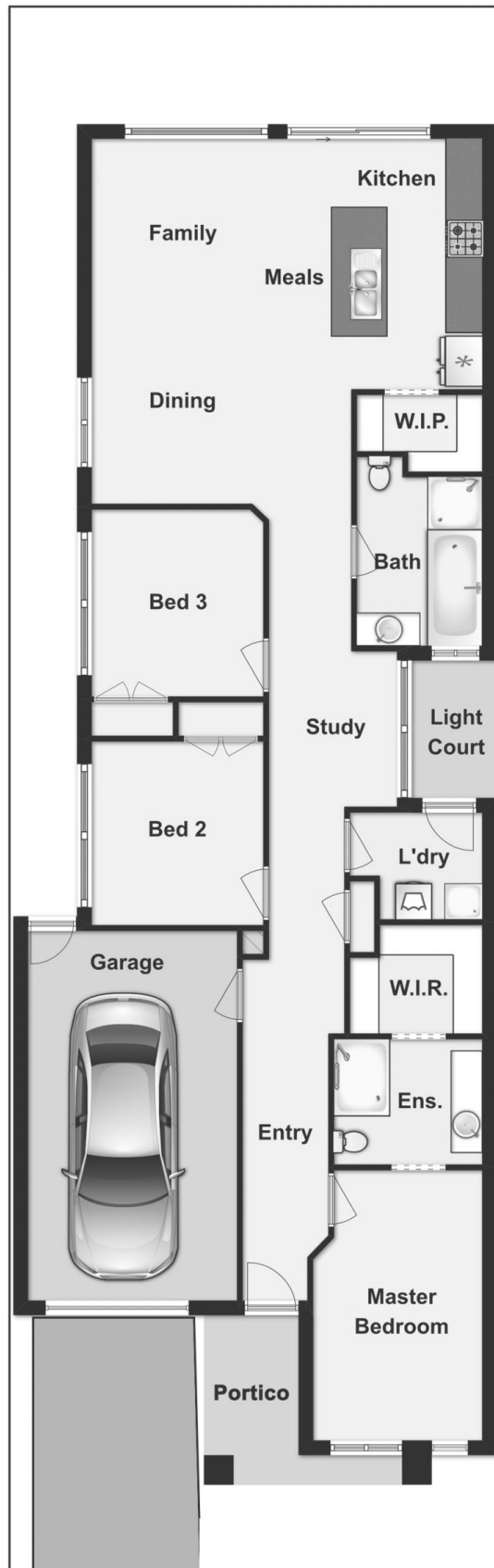
Located in famous Livingston estate, easy access to Casey RACE entertainment centre, library, Chisholm TAFE and Casey Grammar. Only minutes' drive to Cranbourne East Primary and Secondary schools, Cranbourne Park Shopping Complex and Cranbourne Train Station and so much more that this family friendly suburb has to offer.

This North facing 2-year young PORTER DAVIS home is featuring;

- ? 3 generous sized bed room with Built-In-Robes
- ? A master bedroom with Full En Suite and a large Walk-In-Robe
- ? 2 Bathrooms and toilets
- ? Living and dining zones

Price : \$ 442,000

View : <https://www.leandco.com.au/sale/vic/south-east/cranbourne-east/residential/house/6188574>



16 Burchill Avenue, Cranbourne East

Disclaimer: Floor Plan measurements are approximate and are for illustrative purposes only. While we do not doubt the floor plans accuracy, we make no guarantee, warranty or representation as to the accuracy and completeness of the floor plan.

