



33 Grace Park Avenue Springvale VIC

4 5 2

Situated mere minutes from Springvale Shopping Centre, Killester College, train station, library, and much more, this lavish home offers not only an air of luxury but utmost convenience and practicality.

This beautifully designed home is in peak condition and is ready for you to reside in and enjoy its impressive spaciousness and extensive list of facilities.

From the extravagant front to the contemporary yet homey décor, this striking property is perfect for growing families - or those who simply enjoy indulging in a grand lifestyle!

This modern double storey home features:

- 4 oversized bedrooms, all equipped with ensuited
- Huge bathroom to Master with built in wooden sauna
- Functional home office/study
- 3 spacious living areas
- Charming outdoor spaces and balcony
- Security alarm system & intercom

Price : \$ 1,795,000

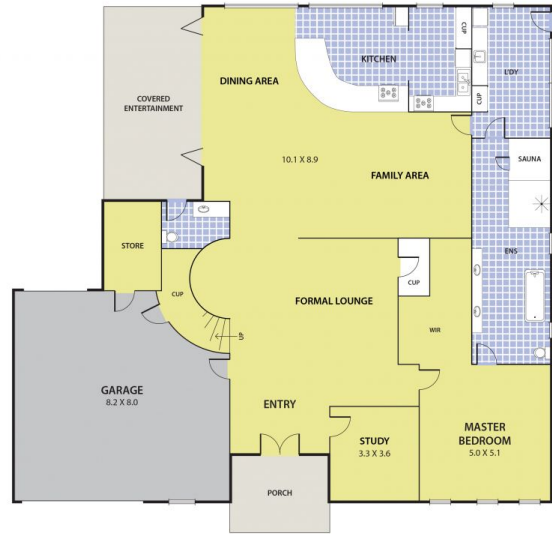
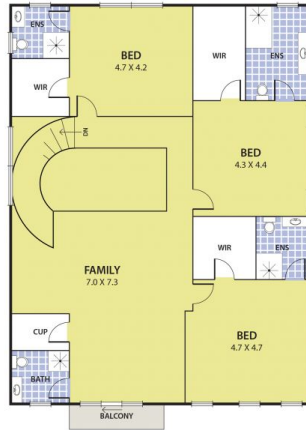
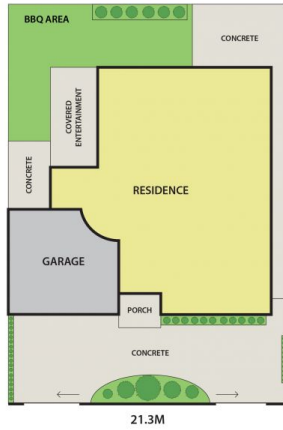
Land Size : 665 sqm

View : <https://www.leandco.com.au/sale/vic/south-east/springvale/residential/house/6188575>



Phuc Le
03 8578 4200

33 Grace Park Avenue, SPRINGVALE



DISCLAIMER:

Please note plans are indicative only and not drawn to exact scale.
All dimensions are approximate