



1/23 Fintonia Road Noble Park VIC

2 1 1

Here is a great opportunity for any first home buyer looking to step into the market or for any investor with high potential rental return. An unique property with functional floor plan, convenient location and just minutes' drive to local schools, shops, transport and easy access to Princes Hwy & Eastlink.

Price : \$ 335,000
Land Size : 103 sqm
View : <https://www.leandco.com.au/sale/vic/south-east/noble-park/residential/unit/6188581>

Offering:

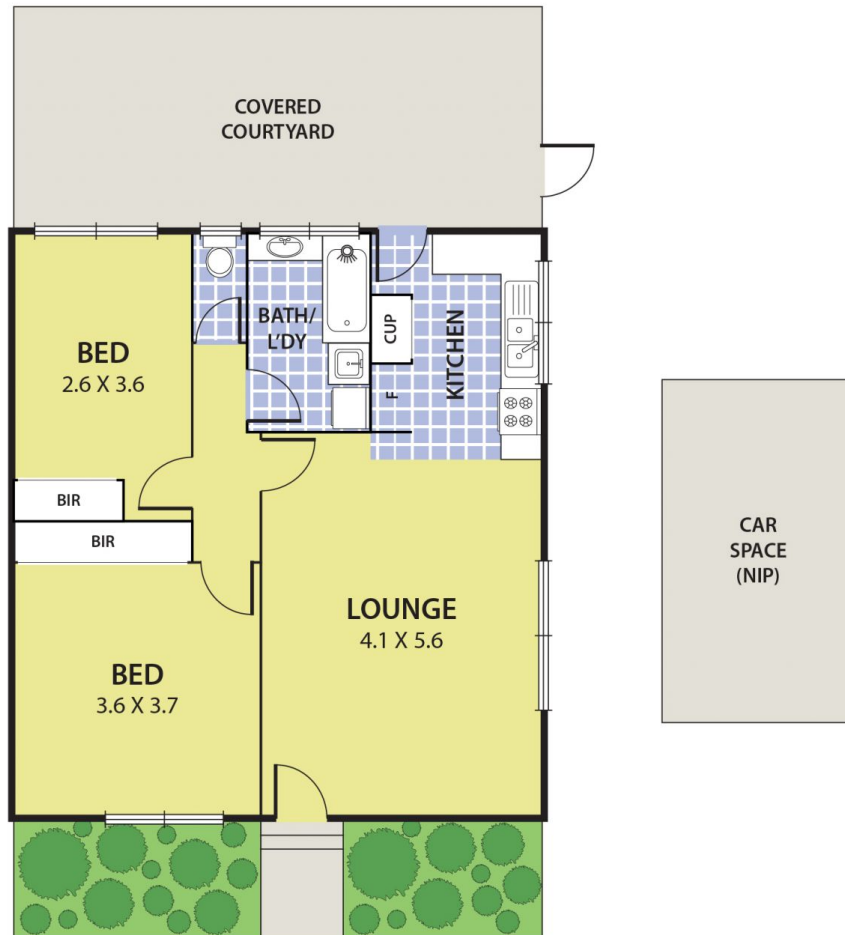
- ? 2 good sized bedrooms
- ? Open plan living/dining
- ? Split system air conditioner.
- ? Low maintaining garden

Contact Binh Tran or Jun Lee for viewing today!

Disclaimer: All information about the property has been

<https://www.leandco.com.au>

1/23 Fintonia Road, NOBLE PARK



DISCLAIMER:

Please note plans are indicative only and not drawn to exact scale.
All dimensions are approximate