



2 Sara Court Noble Park VIC

3 2 2

Looking for a place to grow your family while rental is at challenging stage and record high. This property is located in a peaceful court, close to all amenities with easy access to thoroughfare Corrigan Road, Harold Road to Springvale Road and Springvale South. Only minutes' drive to Parkmore Shopping Centre, Noble Park Shopping Precincts, Noble Park train station and bus stops are only a short stroll away. Keysborough Secondary College and Primary School, Darren Reserve Kindergarten, Medical Centres, Mackay Shopping Centre, and so much more!

Price : \$ 725,000
Land Size : 552 sqm
View : <https://www.leandco.com.au/sale/vic/south-east/noble-park/residential/house/7405265>

- 1970-Built Brick veneer Home is offering:
- ? 3 generous sized bedrooms with BIRs
 - ? 2 Living zones include front lounge and rear family area
 - ? Polished floorboards
 - ? Split A/C systems
 - ? Backyard and garden shed



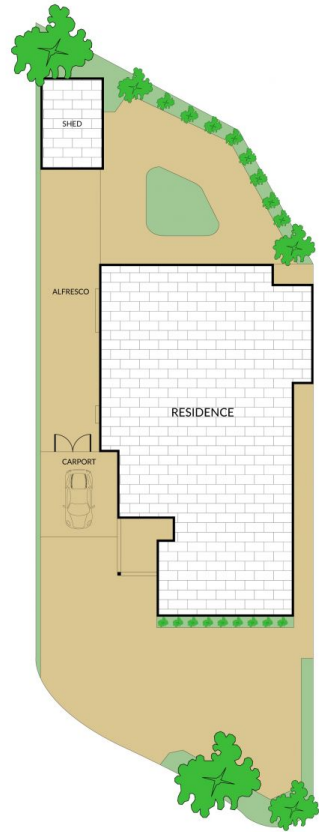
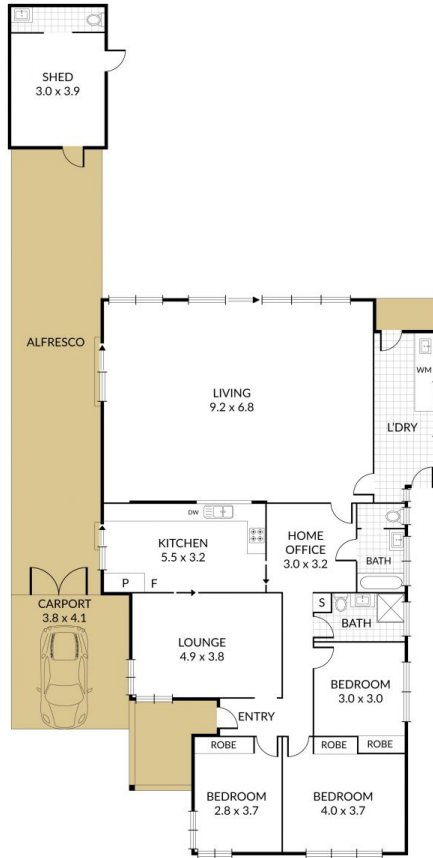
Phuc Le
03 8578 4200



Duncan Le
03 8578 4200



3 x 2 x 2 x



NOTE: Every precaution has been taken to verify the accuracy of the above details. However, prospective purchasers are advised to make their own enquiries.