



1005/2 Connam Avenue Clayton VIC

2 2 1

With its mix of residences, retail and commerce, M-City is a micro-city with a local feel. Located on level 10 of tower 3, this East facing residence offers refined apartment living with contemporary design, spacious floor plan and exceptional finishes.

Price : \$ 544,000
View : <https://www.leandco.com.au/sale/vic/east/clayton/residential/apartment/7587319>

Easy access to resort lifestyle facilities including an outdoor swimming pool, tennis court, BBQ area, landscaped gardens, fitness centre, child-care facilities, medical centre, pharmacy, specialty stores, restaurants, cafes, Woolworths, K-Mart and Village Cinemas.



Phuc Le
03 8578 4200



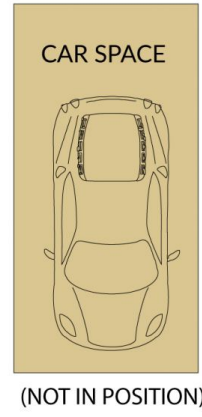
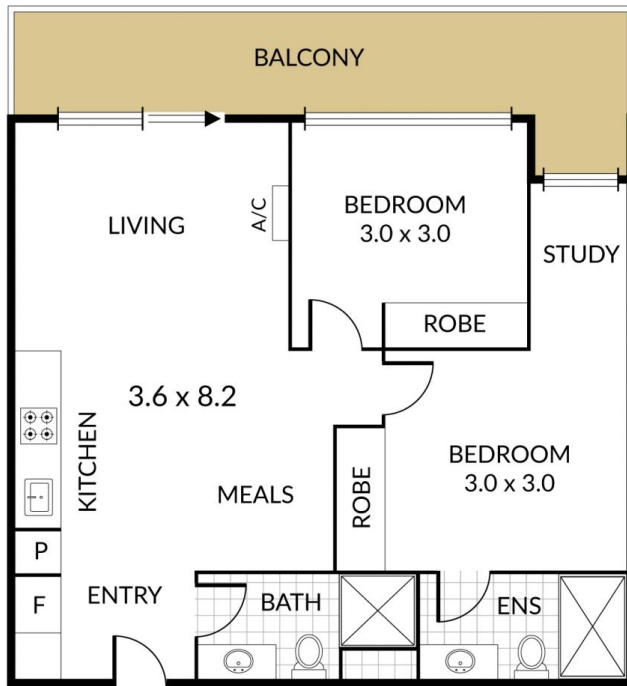
Danny Huynh
0411 127 832

Whether you are a first home buyer, investor or downsizer, it is for you.

Featuring:
? Two bedrooms with BIRs and two bathrooms, including



2 x 2 x 1 x



NOTE: Every precaution has been taken to verify the accuracy of the above details. However, prospective purchasers are advised to make their own enquiries.