

16/17-19 Spring Road Springvale South VIC

3 1 1

Situated at the rear of a peaceful, leafy community behind Amersham Reserve Playground, this fantastic three-bedroom unit with a spacious interior, plenty of parking space and a prime location in Springvale South offers an abundance of convenience, comfort and style.

Sitting on a huge block of land 502m², the well-maintained home features a large kitchen with full of light and modern with stainless steel appliances.

Two bedrooms have built-in robes, with a ceiling fan and a spacious sun-filled living opening to kitchen & meals areas. Approximately 600 meters to Springvale Plaza Shopping Centre and Aldi with a broad selection of early learning centres and schools within walking distance. Easy access to Princes Highway, Dandenong Bypass, Eastlink and Monash Freeway.

Price : UNDER CONTRACT
Land Size : 502 sqm
View : <https://www.leandco.com.au/sale/vic/south-east/springvale-south/residential/unit/7800428>



Phuc Le
03 8578 4200



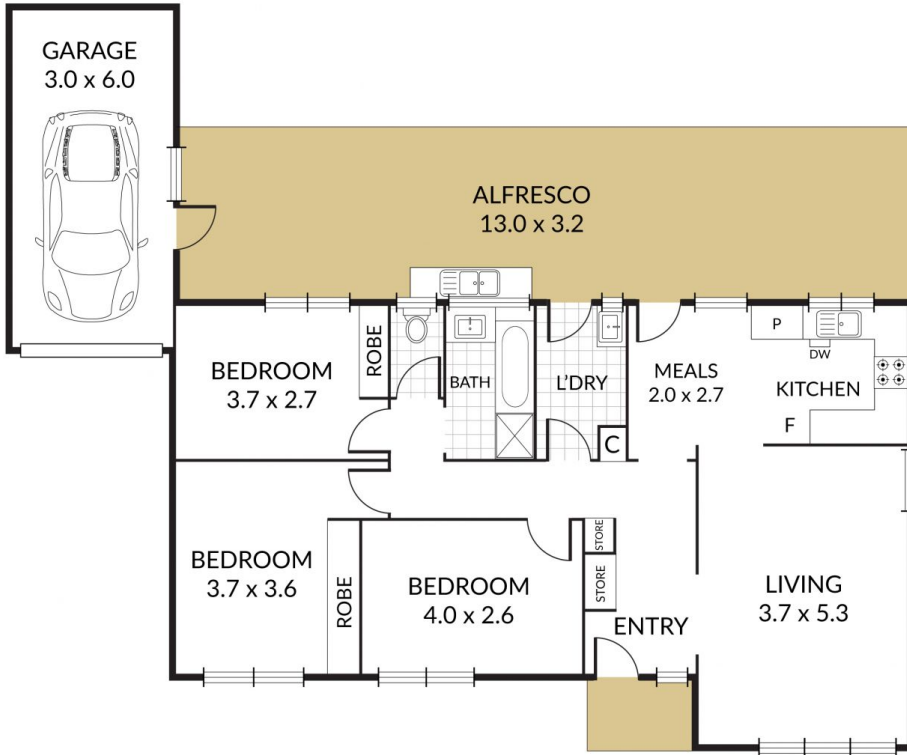
Duncan Le
03 8578 4200

More highlights:

<https://www.leandco.com.au>



3 x  1 x  1 x 



NOTE: Every precaution has been taken to verify the accuracy of the above details. However, prospective purchasers are advised to make their own enquiries.