



**1208/2 Connam Avenue Clayton VIC**

**2** **2** **1**

M-City is eastern Melbourne's most desirable destination for living, working, dining, entertainment and leisure. M-City Shopping Centre offers a brand new K-Mart, Woolworths, Village Cinema, a dining hall, as well as a range of specialty stores such as health, beauty, home and wellness providers.

From catching the latest movies at the cinema to enjoying memorable evenings with friends over dinner and drinks.

A short walk to Monash University, Ikea Homemaker Centre, Monash Medical Centre and easy access to Princess Highway and Monash Freeway .

Featuring:

? Highest floor of M3 apartment building overlooks Mt Dandenong

? Two bedrooms, two bathrooms incorporates a spacious floor plan

**Price** : \$585,000

**View** : <https://www.leandco.com.au/sale/vic/east/clayton/residential/apartment/7895469>

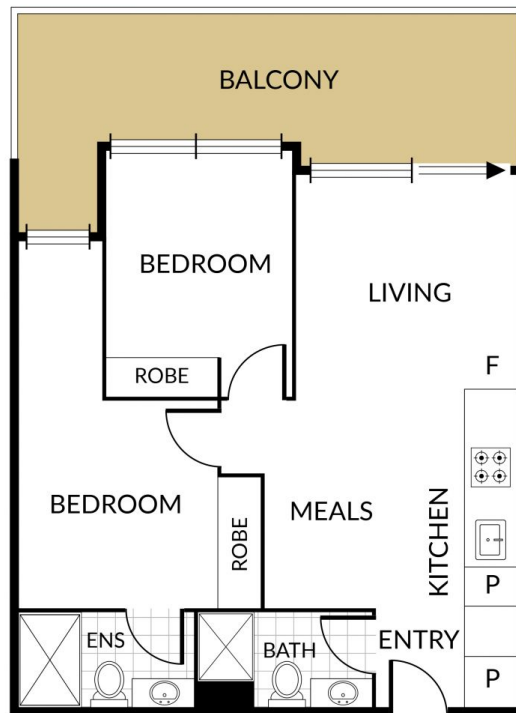


**Phuc Le**  
**03 8578 4200**



**Duncan Le**  
**03 8578 4200**

2 x  2 x 



**NOTE:** Every precaution has been taken to verify the accuracy of the above details. However, prospective purchasers are advised to make their own enquiries.