



768 Heatherton Road Springvale South VIC

3 1 2

This charming home offers a comfortable and convenience lifestyle. The open-plan layout creates a warm and inviting atmosphere, the bedrooms are generously sized, providing a peaceful sanctuary for relaxation.

Located in the sought-after suburb of Springvale South, this property is conveniently close to Springvale Plaza shopping centre, schools, parks and public transport. You'll have everything you need right at your doorstep!

? Features:

Price : AUCTION
Land Size : 536 sqm
View : <https://www.leadco.com.au/sale/vic/south-east/springvale-south/residential/house/7998622>



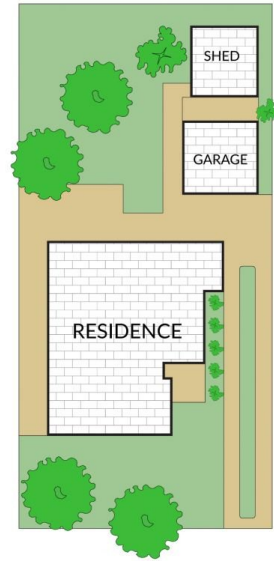
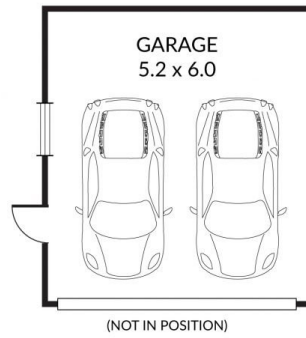
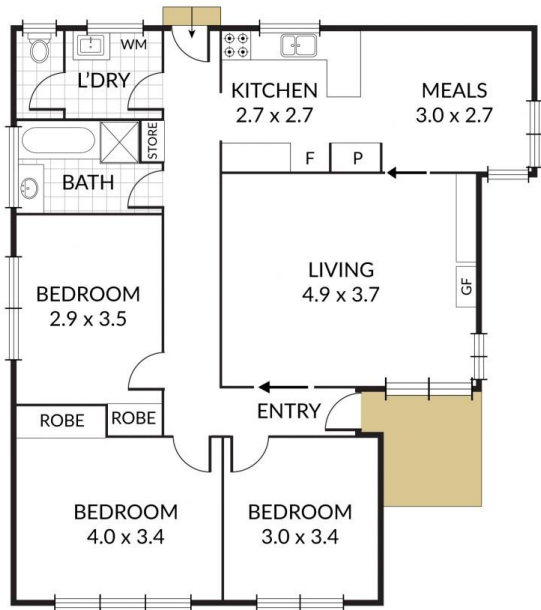
Phuc Le
03 8578 4200



Duncan Le
03 8578 4200



3 x 1 x 2 x



NOTE: Every precaution has been taken to verify the accuracy of the above details. However, prospective purchasers are advised to make their own enquiries.