



## 222/8 Grosvenor Street Abbotsford VIC

2 2 1

Inner Melbourne living - A sense of Resort-like Indulgence

The Precinct offers secure entry with a fully equipped gym, indoor heated pool, meeting room, BBQ areas and peaceful green outdoor areas. Just minutes from Victoria Gardens shopping Centre, IKEA, within walking distance to the stunning Yarra River bike trails, public transport is practically at doorstep, 3km approximately from Melbourne CBD.

Accommodation includes two bedrooms and a study/office. Ensuite to master bedroom- Spacious, light filled open plan living with floor to ceiling windows, plus large L-shape balcony. The kitchen features a light colour scheme, stone benchtop, Miele oven & gas cooktop, dishwasher and

**Type** : Apartment  
**Price** : \$ 570,000  
**Land Size** : 135 sqm  
**View** : <https://www.leandco.com.au/sale/vic/inner-city/abbotsford/residential/apartment/8196005>



**Duncan Le**  
03 8578 4200

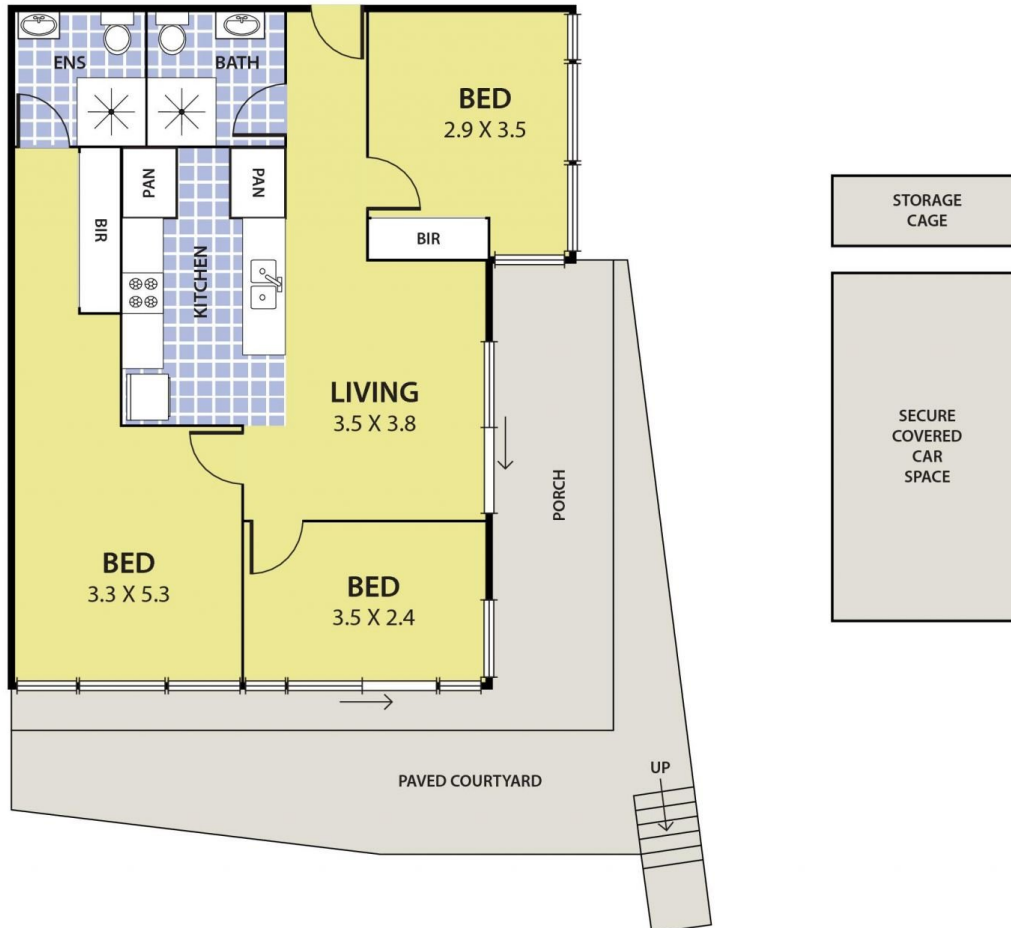


**Phuc Le**  
03 8578 4200

[For full version visit the website](https://www.leandco.com.au)

<https://www.leandco.com.au>

# 222/8 Grosvenor Street, ABBOTSFORD



**DISCLAIMER:**

Please note plans are indicative only and not drawn to exact scale.  
All dimensions are approximate